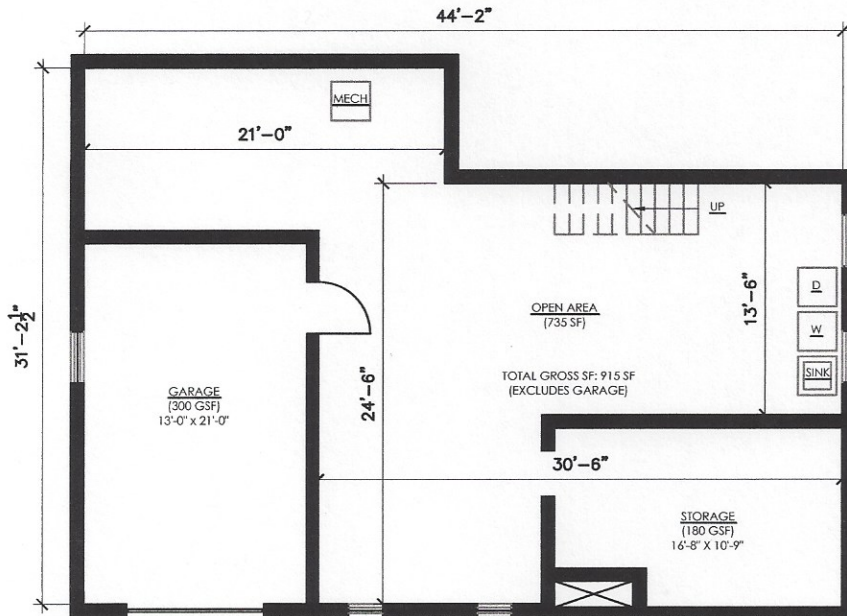


MAIN FLOOR PLAN



BASEMENT PLAN

GROSS SQUARE FOOTAGE	
MAIN LEVEL	1045 SF
BASEMENT	915 SF
SUBTOTAL	1955 SF
GARAGE	300 SF
TOTAL	2255 SF

**87 LONGVIEW ROAD
STATEN ISLAND, NY 10304**

Holly's Staten Island Buzz Realty
60 Bay Street, Suite 701, Staten Island, New York 10301
Office: 718-702-6848 Cell: 917-414-0847 Holly@WiesnerOlivieri.com

date: 12.01.2015

scale: Not To Scale

dwg no:

PL-01

POWER ARCHITECTURE DESIGN STUDIO
259 Saint Mark's Place
Staten Island, NY 10301

PA